

DESCRIPTION

The GLF1531 is an ultra-efficiency integrated N-channel power protection switch, with a wide input range from 0.8 V to 5.5 V.

The GLF1531 provides the programmable output voltage (V_{OUT}) rise time by an external capacitor on the SR pin. It limits the inrush current at start up condition and helps to minimize the voltage drop. The integrated output discharge FET discharges output voltage quickly when the device is disabled.

The GLF1531 offers the best-in-class on the size, on-resistance (R_{ON}) performance, and the wide operating temp range up to 105 °C.

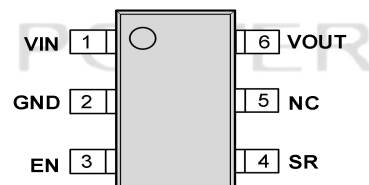
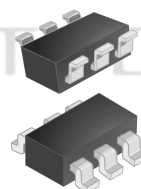
FEATURES

- Supply Voltage Range: 0.8 V to 5.5 V
- Continuous Output Current Capability: 2 A
- Low R_{ON} : 33 m Ω Typ. at 5.5 V_{IN}
- Low Quiescent Current I_Q :
14 μ A Typ. at 5 V_{IN}
- Low Shutdown Current I_{SD} :
13 nA Typ. at 5 V_{IN}
- Programmable V_{OUT} Rising Time, SR Pin
- Quick Output Discharge Switch
- Wide Operating Temp Range:
- 40 °C to 105 °C

APPLICATIONS

- Industrial Systems
- Communication / Network System
- Medical Meters
- Point of Sales Devices

PACKAGE



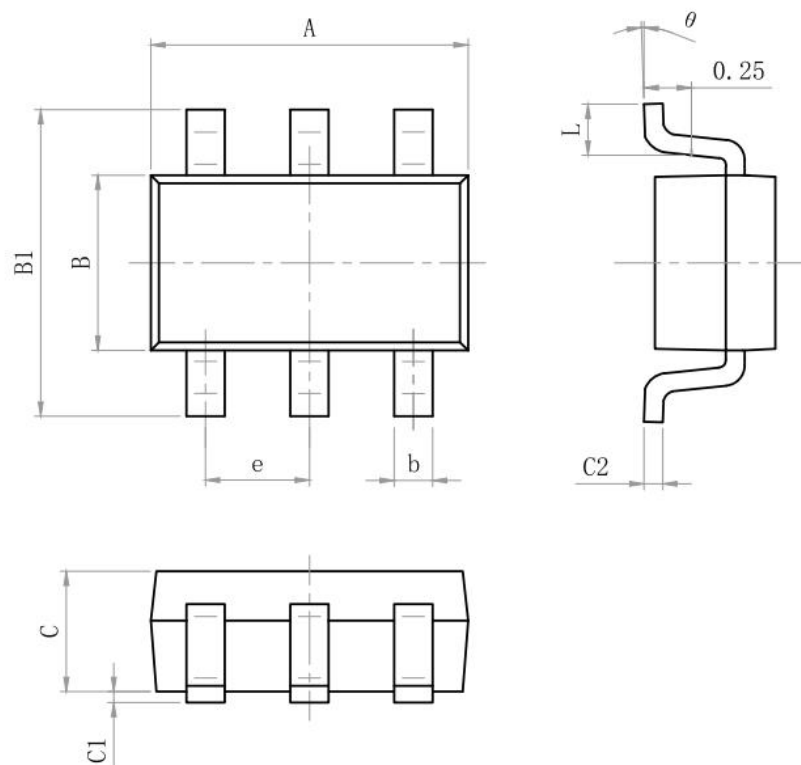
SOT23 - 6L

DEVICE ORDERING INFORMATION

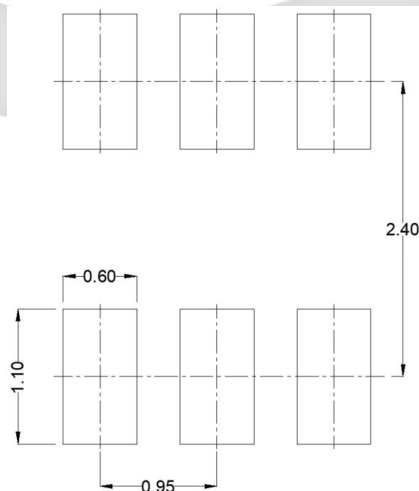
Part Number	Top Mark	R_{ON} (Typ) at 5.5 V_{IN}	V_{OUT} Rise Time	EN Activity	Package
GLF1531-T2G7	HE	33 m Ω	Programmable	High	SOT23 - 6L

PACKAGE OUTLINE

Size Mark	Min (mm)	Max (mm)	Size Mark	Min (mm)	Max (mm)
A	2.82	3.02	C	1.05	1.15
e	0.95 (BSC)		C1	0.03	0.15
b	0.28	0.45	C2	0.12	0.23
B	1.50	1.70	L	0.35	0.55
B1	2.60	3.00	θ	0°	8°

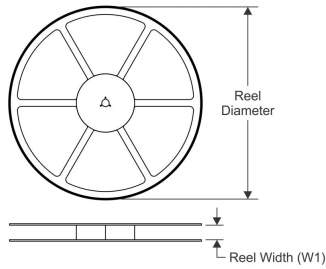


Recommended Footprint

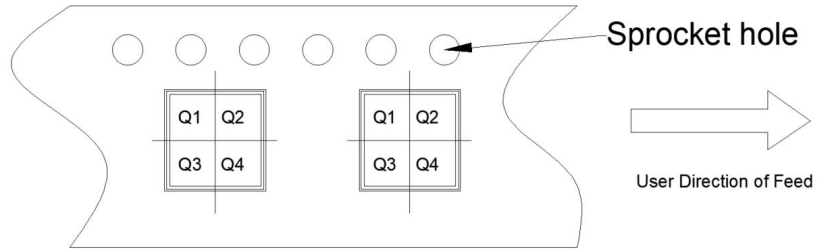


TAPE AND REEL INFORMATION

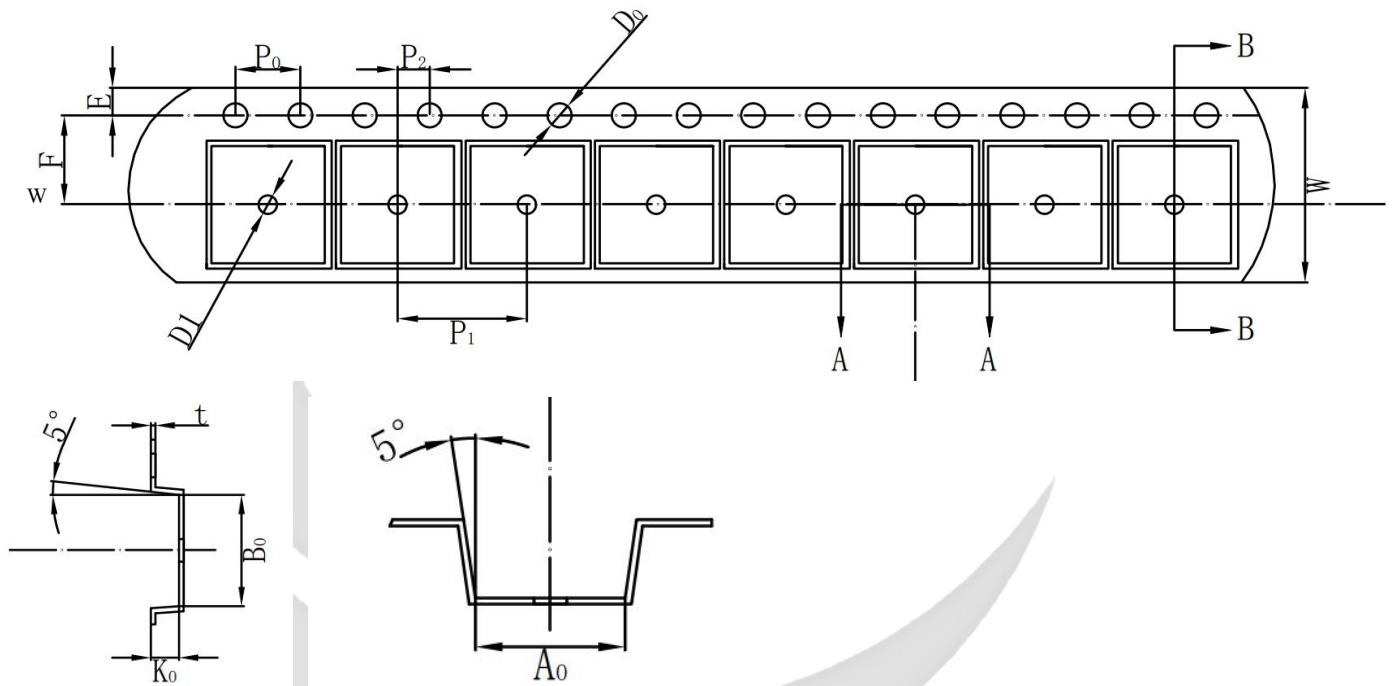
REEL DIMENSIONS



QUADRANT ASSIGNMENTS PIN 1 ORIENTATION TAPE



TAPE DIMENSIONS



Device	Package	Pins	SPQ	Reel Diameter (mm)	Reel WidthW1	A0	B0	K0	P1	W	Pin1
GLF1531-T2G7	SOT23-6	6	3000	178	9	3.25	3.30	1.38	4	8	Q3

Remark:

A0: Dimension designed to accommodate the component width

B0: Dimension designed to accommodate the component length

C0: Dimension designed to accommodate the component thickness

W: Overall width of the carrier tape

P1: Pitch between successive cavity centers