

### DESCRIPTION

The GLF2365A is an advanced technology fully integrated power switch for applications that required precision output current limitation. The GLF2365A also features a variety of protection functions, including under voltage lockout, reverse current blocking (RCB), short circuit protection, and thermal shutdown.

The GLF2365A provides a built-in output voltage slew rate control to eliminate the inrush current and voltage surge. The FLGB output pin can be used to send a fault event signal to the system controller. The integrated thermal shutdown (TSD) insures complete protection for the switch during output current limit and short circuit conditions. The GLF2365A is an ideal switch for any USB power supply.

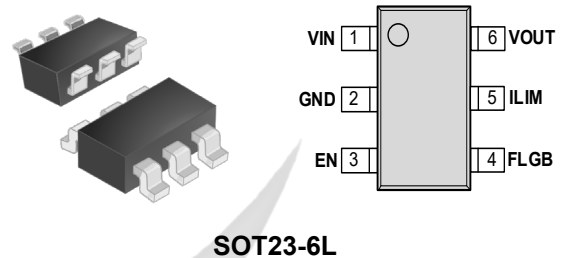
### FEATURES

- Input Range: 2.5 V to 5.5 V
- Programmable Output Constant Current Limit:
  - Range: 100 mA to 3.0 A
- Low  $R_{ON}$ : 56 m $\Omega$  Typ. at 5.0 V<sub>IN</sub>
- Ultra-Low  $I_Q$ : 16  $\mu$ A Typ. at 5.0 V<sub>IN</sub>
- Ultra-Low  $I_{SD}$ : 62 nA Typ. at 5.0 V<sub>IN</sub>
- Under Voltage Lockout Protection
- Output Voltage Slew Rate Controlled
- Reverse Current Blocking Protection
- Constant Current During Over Current
- Short Circuit Protection
- Deglitched Fault Flag Indication
- Integrated Output Discharge Switch
- Thermal Shutdown Protection

### APPLICATIONS

- Notebooks and Tablets
- Wireless LAN and Broadband Access Devices
- Storage and Peripherals
- Smart Mobile Devices

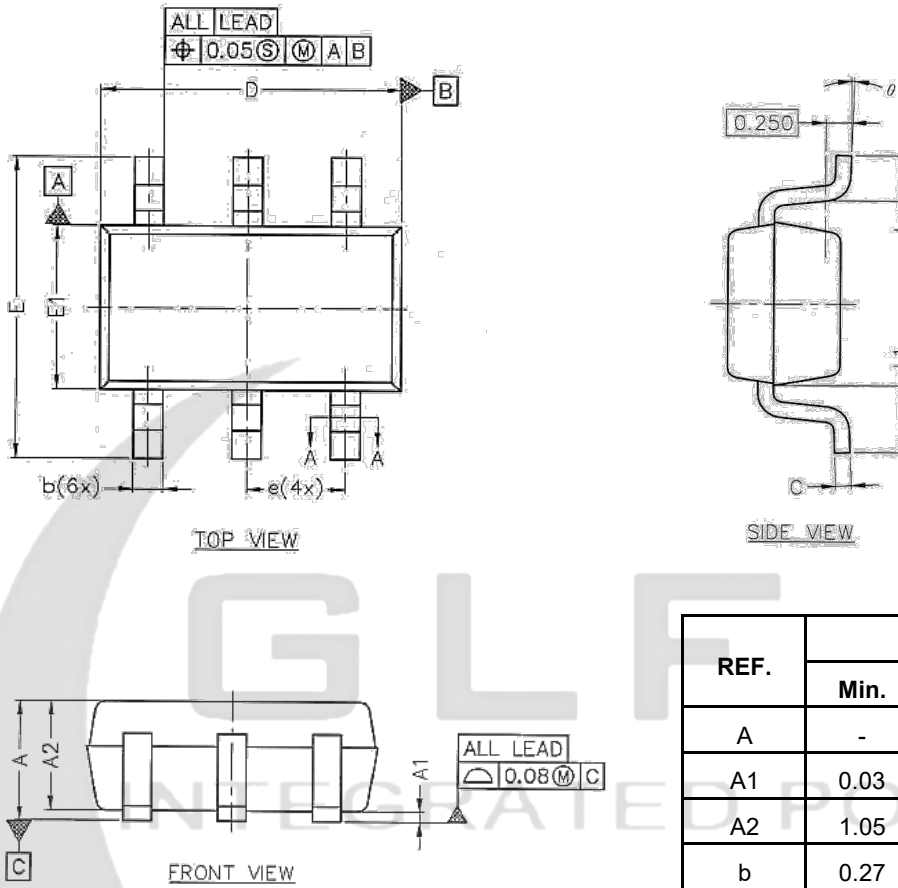
### PACKAGE



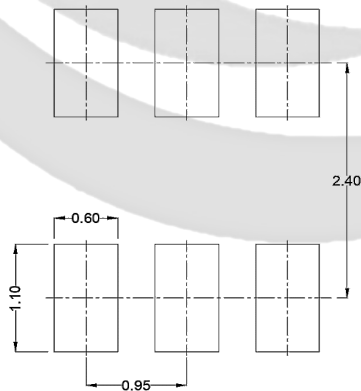
### DEVICE ORDERING INFORMATION

Part Number	Top Mark	Current Limit $I_{LIM}$	Output Discharge	Fault Flag FLGB	EN Activity	Package
GLF2365A-T2G7	JK	Programmable Output Current Limit Up to 3.0 A	93 $\Omega$	Yes	High	SOT23-6L

**PACKAGE OUTLINE**



**Recommended Footprint**

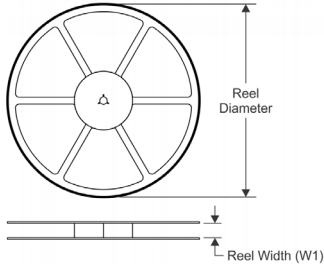


REF.	Dimensions Ref.		
	Min.	Nom.	Max.
A	-	-	1.25
A1	0.03	0.08	0.15
A2	1.05	1.10	1.15
b	0.27	-	0.35
b1	0.26	0.285	0.31
c	0.135	-	0.23
c1	0.127	0.152	0.178
D	2.82	2.92	3.02
E	2.60	2.90	3.00
E1	1.50	1.62	1.70
e	0.95 BSC		
e1	1.90 BSC		
L	0.35	0.45	0.55
L1	0.49	0.64	0.79
$\theta$	0°	-	8°

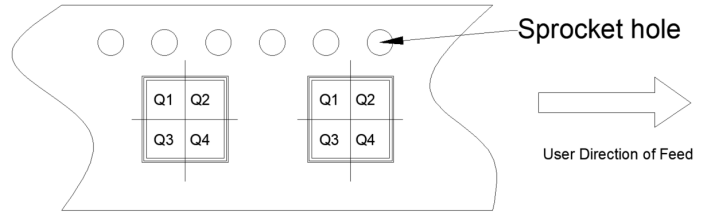
Part Number	Package	Pins	Pitch	Top Mark	Moisture Sensitivity Level	Environmental Information
GLF2365A-T2G7	SOT23-6L	6	0.95mm	JK	MSL3	ROHS+HF

**TAPE AND REEL INFORMATION**

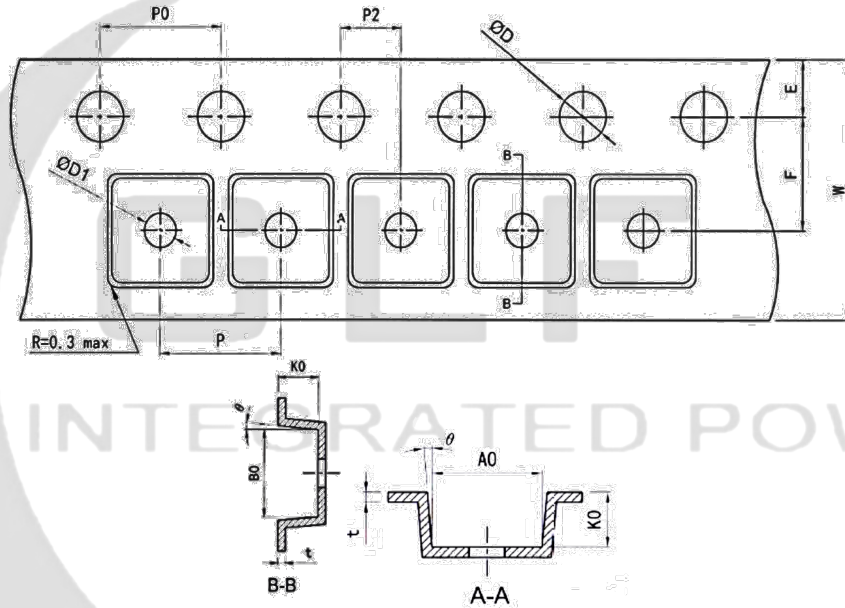
**REEL DIMENSIONS**



**QUADRANT ASSIGNMENTS PIN 1 ORIENTATION TAPE**



**TAPE DIMENSIONS**



Device	Package	Pins	SPQ	Reel Diameter (mm)	Reel Width W1	A0	B0	K0	P	W	Pin1
GLF2365A-T2G7	SOT23-6L	6	3000	178	9	3.26	3.23	1.05	4	8	Q3

**Remark:**

- A0: Dimension designed to accommodate the component width
- B0: Dimension designed to accommodate the component length
- K0: Dimension designed to accommodate the component thickness
- W: Overall width of the carrier tape
- P1: Pitch between successive cavity centers